

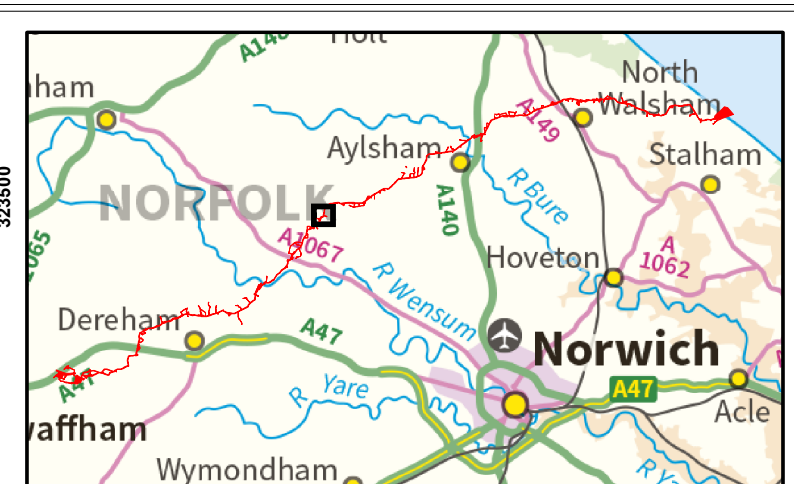
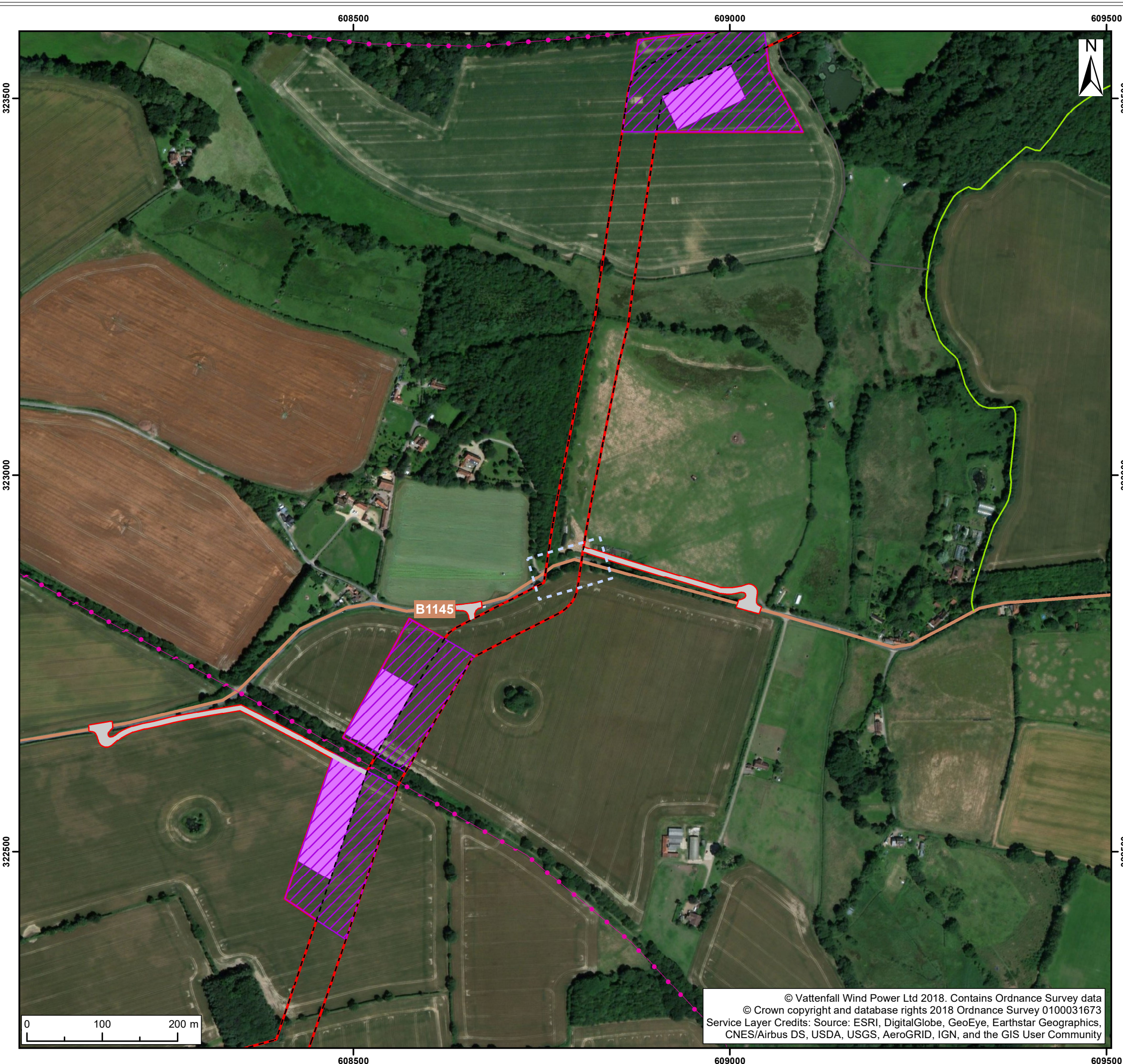
# Norfolk Vanguard Offshore Wind Farm Plan Showing Indicative Tree Removal Part 3 of 3

Applicant: Norfolk Vanguard Limited  
Document Reference: ExA; ISH; 10.D3.11  
Deadline 3

Date: February 2019

*Photo: Kentish Flats Offshore Wind Farm*





Legend:

- Norfolk Vanguard onshore red line boundary
- Onshore cable route**
- Onshore cable route
- Trenchless crossing zone (e.g. HDD)
- Indicative trenchless crossing compound
- Access**
- Construction access
- B road
- Marriott's Way
- Bridleway<sup>2</sup>
- Footpath<sup>2</sup>
- Areas of potential vegetation removal

<sup>1</sup> Sustrans, 2017 <sup>2</sup> Ordnance Survey 1:25000 map

Project: Norfolk Vanguard	Report: Examination: For Information Only
------------------------------	---

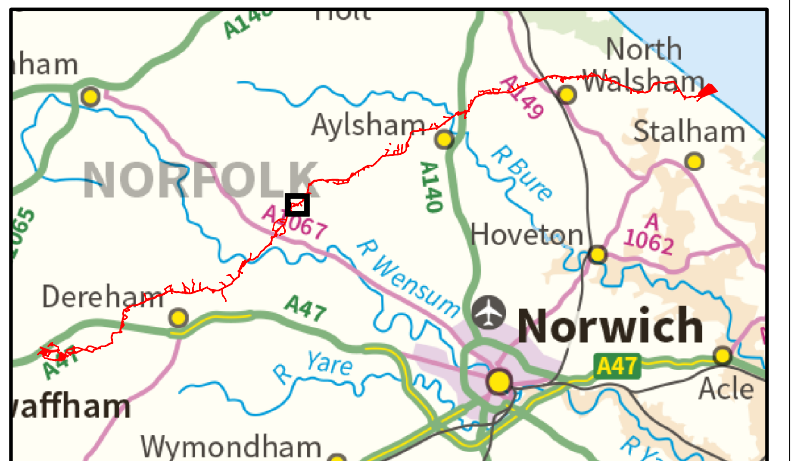
Title: ExA; ISH;10.D311  
 B1145, west of Reepham  
 (map 6 of 9)  
 Potential Hedgerow/Hedgetree Removal

Figure: 6	Drawing No: ExA; ISH;10.D311				
Revision:	Date:	Drawn:	Checked:	Size:	Scale:
01	12/02/2019	TH	JP	A3	1:5,000
02	13/02/2019	TH	JP	A3	1:5,000

Co-ordinate system: British National Grid EPSG: 27700

© Vattenfall Wind Power Ltd 2018. Contains Ordnance Survey data  
 © Crown copyright and database rights 2018 Ordnance Survey 0100031673  
 Service Layer Credits: Source: ESRI, DigitalGlobe, GeoEye, Earthstar Geographics,  
 CNES/Airbus DS, USDA, USGS, AeroGRID, IGN, and the GIS User Community





Legend:

- Norfolk Vanguard onshore red line boundary
- Onshore cable route**
- Onshore cable route
- Trenchless crossing zone (e.g. HDD)
- Indicative trenchless crossing compound
- Access**
- Construction access
- Operation access
- B road
- Marriott's Way
- Bridleway<sup>2</sup>
- Areas of potential vegetation removal

<sup>1</sup> Sustrans, 2017 <sup>2</sup> Ordnance Survey 1:25000 map

Project: Norfolk Vanguard	Report: Examination: For Information Only
------------------------------	---

Title: ExA; ISH;10.D311  
 Minor Road near Hackford Hall  
 (map 7 of 9)  
 Potential Tree Removal

Figure:	7	Drawing No:	ExA; ISH;10.D311			
Revision:	Date:	Drawn:	Checked:	Size:	Scale:	
01	12/02/2019	TH	JP	A3	1:5,000	
02	13/02/2019	TH	JP	A3	1:5,000	

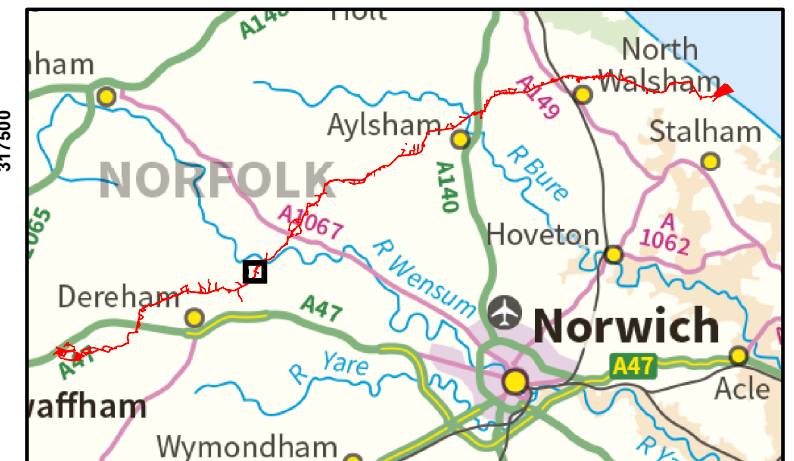
Co-ordinate system: British National Grid EPSG: 27700

© Vattenfall Wind Power Ltd 2018. Contains Ordnance Survey data  
 © Crown copyright and database rights 2018 Ordnance Survey 0100031673  
 Service Layer Credits: Source: ESRI, DigitalGlobe, GeoEye, Earthstar Geographics,  
 CNES/Airbus DS, USDA, USGS, AeroGRID, IGN, and the GIS User Community





© Vattenfall Wind Power Ltd 2018. Contains Ordnance Survey data  
 © Crown copyright and database rights 2018 Ordnance Survey 0100031673  
 Service Layer Credits: Source: ESRI, DigitalGlobe, GeoEye, Earthstar Geographics,  
 CNES/Airbus DS, USDA, USGS, AeroGRID, IGN, and the GIS User Community



- Legend:
- Norfolk Vanguard onshore red line boundary
  - Onshore cable route**
  - Onshore cable route
  - Trenchless crossing zone (e.g. HDD)
  - Indicative trenchless crossing compound
  - Access**
  - Construction access
  - Operation access
  - Wensum Way
  - Bridleway<sup>2</sup>
  - Areas of potential vegetation removal

<sup>1</sup> Sustrans, 2017 <sup>2</sup> Ordnance Survey 1:25000 map

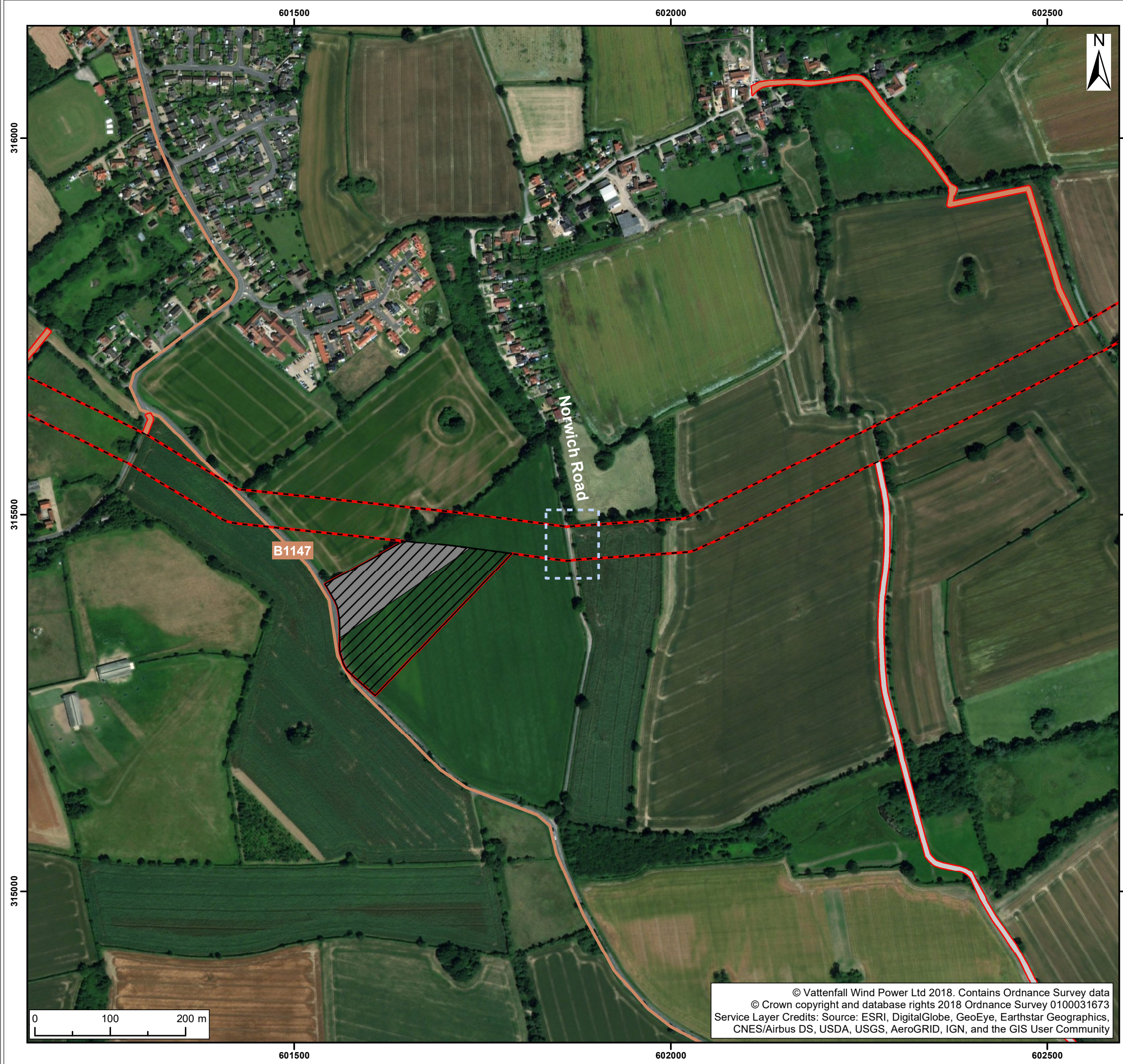
Project: Norfolk Vanguard	Report: Examination: For Information Only
------------------------------	---

Title: ExA; ISH;10.D311  
 Elsing Road, near River Wensum  
 (map 8 of 9)  
 Potential Hedgerow/Hedgetree Removal

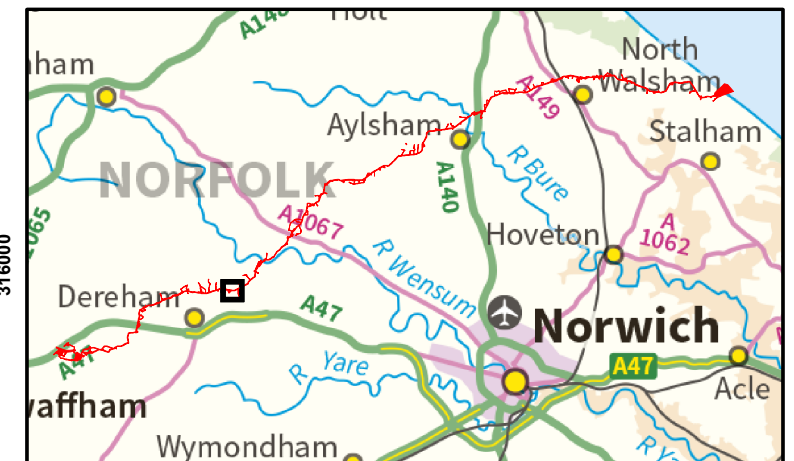
Figure: 8	Drawing No: ExA; ISH;10.D311				
Revision:	Date:	Drawn:	Checked:	Size:	Scale:
01	12/02/2019	TH	JP	A3	1:5,000
02	13/02/2019	TH	JP	A3	1:5,000

Co-ordinate system: British National Grid EPSG: 27700





© Vattenfall Wind Power Ltd 2018. Contains Ordnance Survey data  
 © Crown copyright and database rights 2018 Ordnance Survey 0100031673  
 Service Layer Credits: Source: ESRI, DigitalGlobe, GeoEye, Earthstar Geographics,  
 CNES/Airbus DS, USDA, USGS, AeroGRID, IGN, and the GIS User Community



- Legend:
- Norfolk Vanguard onshore red line boundary
  - Onshore cable route**
  - Onshore cable route
  - Mobilisation zone
  - Indicative mobilisation area compound
  - Access**
  - Construction access
  - Operation access
  - B road
  - Footpath<sup>2</sup>
  - Areas of potential vegetation removal

<sup>1</sup> Sustrans, 2017 <sup>2</sup> Ordnance Survey 1:25000 map

Project: Norfolk Vanguard	Report: Examination: For Information Only
------------------------------	---

Title: ExA; ISH;10.D311  
 Norwich Road, Swanton Morley  
 (map 9 of 9)  
 Potential Tree Removal

Figure: 9	Drawing No: ExA; ISH;10.D311				
Revision: 01	Date: 12/02/2019	Drawn: TH	Checked: JP	Size: A3	Scale: 1:5,000
Revision: 02	Date: 13/02/2019	Drawn: TH	Checked: JP	Size: A3	Scale: 1:5,000

Co-ordinate system: British National Grid EPSG: 27700

